

Product Information

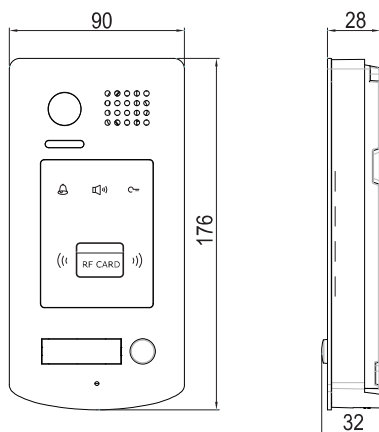
DT596ID Series 2-Wire Outdoor Station



DESCRIPTION

2-wire system color outdoor station with proximity ID card access control

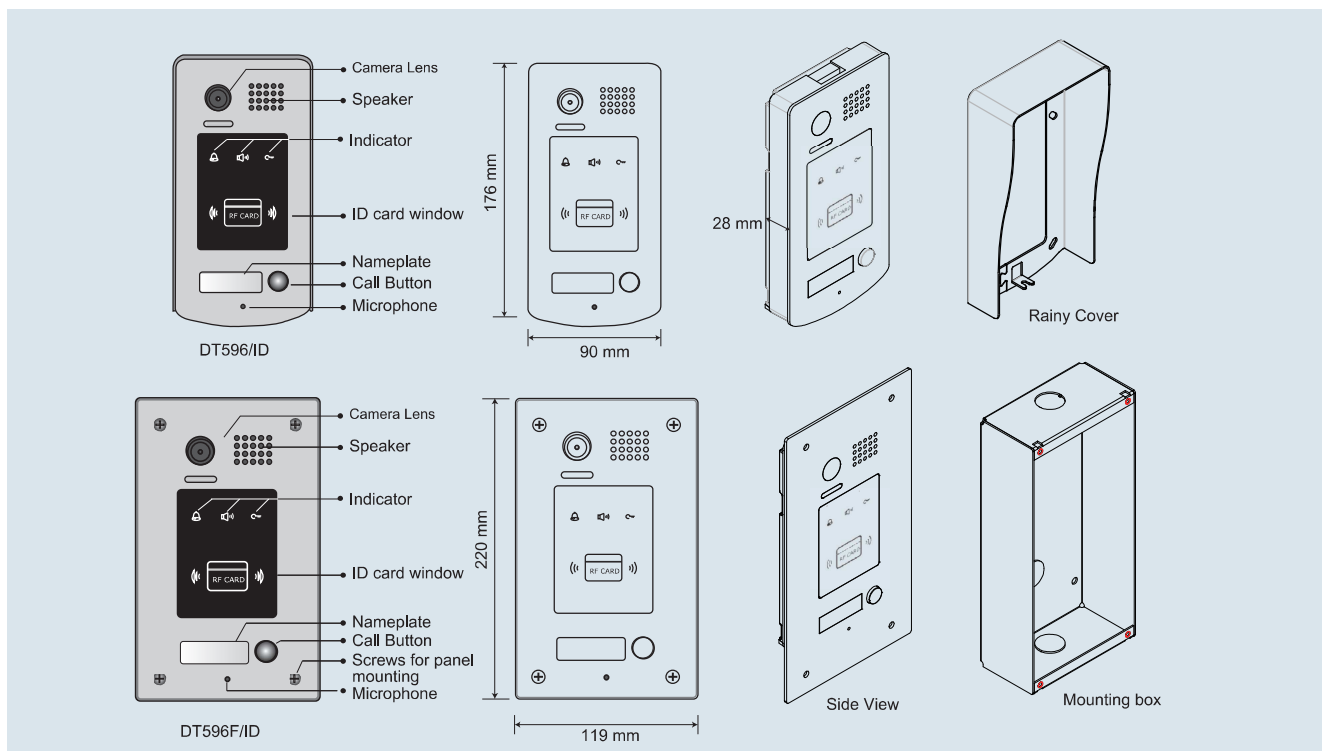
DIMENSION



FEATURES

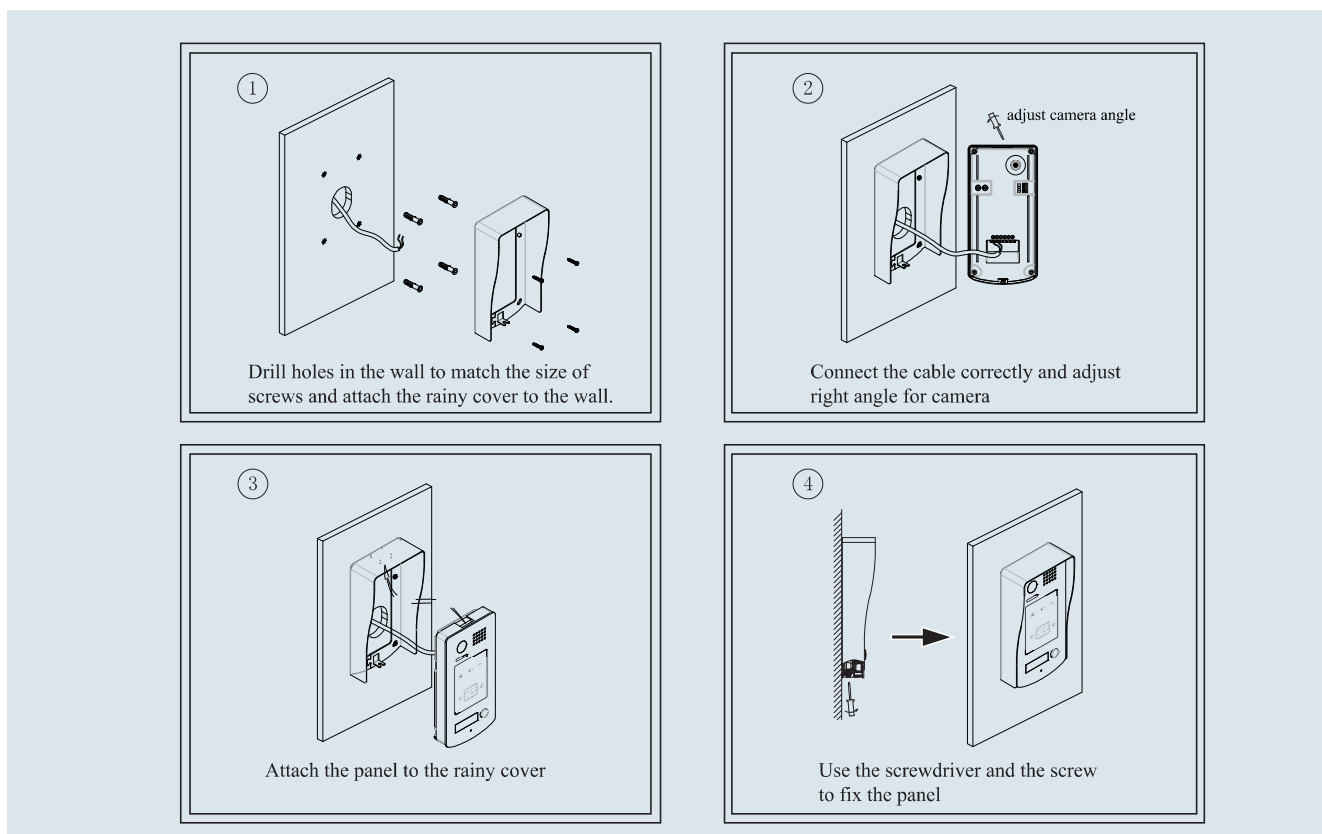
- ▶ Full stainless steel design with vandal proof function
 - ▶ 4mm plexiglass cover for protecting;
 - ▶ Proximity access control
 - ▶ Color CCD Camera with high resolution;
 - ▶ Name plate with background light;
 - ▶ Two locks control by separately through EM card;
- 1* Max.1000 EM cards for proximity;
- ▶ Infra-red LED for night view;
 - ▶ IP55 protection rate;
 - ▶ Rainy cover for surface or full flush mounting by stainless steel panel;
 - ▶ Compatible with all DT two wire system models

1. Parts and Functions

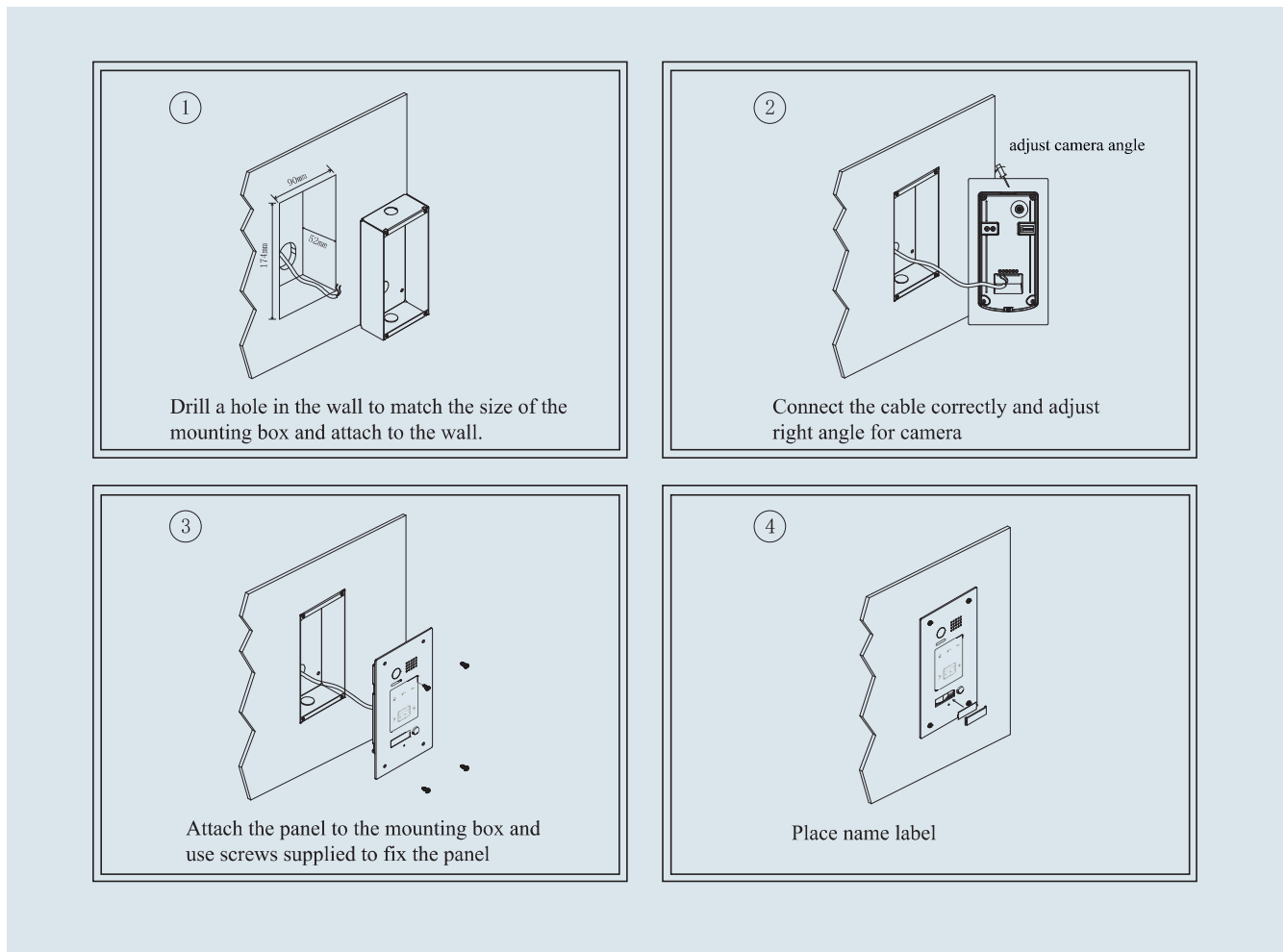


2. Door Station Mounting

DT596/ID Mounting



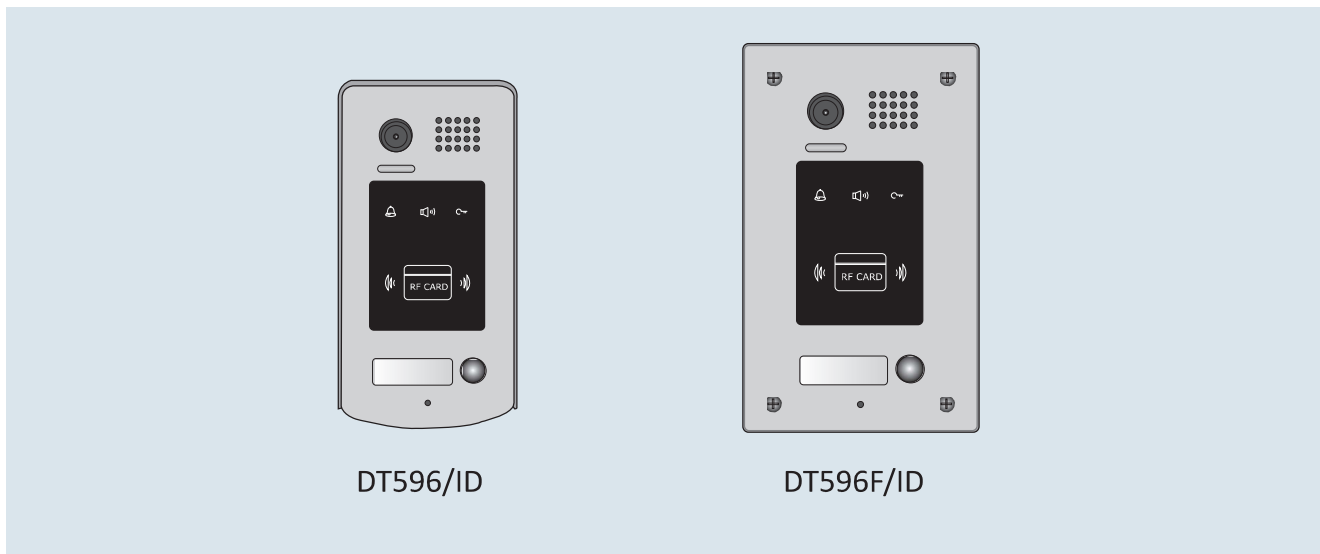
DT596F/ID Mounting



3. Specification

- * Power Supply : DC 24V (supplied by PS4-24V or PS5-24V);
- * Power Consumption: Standby 60mA; Working status 200mA;
- * Camera: Pinhole Sharp Color CCD; 420 TV Lines;
- * Unlocking time: 1-99S, set by monitor or outdoor station;
- * Talk Time: 90S;
- * Lock Power supply: 12Vdc, 300mA(Internal Power);
- * Temperature: -10⁰C~+45⁰C;
- * Wiring: 2 wires (non-polarity);
- * Dimension: 176(H)×90(W)×28(D)mm(DT596/ID)
220(H)×119(W)×52(D)mm(DT596F/ID)

4. Ordering Information for Door Station



DT596/ID

DT596F/ID

Model No.	Brief Description	Remark
DT596/ID	Color CCD Outdoor Station with rain cover(Proximity Access version)	NSTC, PAL must be specified
DT596F/ID	Color CCD Outdoor Station by flush mounting(Proximity Access version)	NSTC, PAL must be specified

5. Packing Information



Dimensions: 202(H)×100(W)×60(D)mm
Gross Weight: 0.75Kg

Carton: 415 (H)×360 (W)×265 (D)mm
Quantity: 28PCS